

# **TouchRight Utilities**

**for Windows**

**Right Click access for Pens and  
Touchscreens**

**Version 1.40 Release 3**

**User's Guide**

## **TouchRight Utilities: for Windows; Right Click access for Pens and Touchscreens; Version 1.40 Release 3; User's Guide**

### **IMG Real World Press**

179 Niblick Road #454  
Paso Robles, CA 93446  
1-800-889-0987 (US & Canada)  
+1-818-701-1579  
+1-818-936-0200 (fax)

Website: <http://www.imgpresents.com>

To report errors, please send a note to [ts@imgpresents.com](mailto:ts@imgpresents.com)

IMG Real World Press is a division of Innovation Management Group, Inc.

TouchRight Utilities, Version 1.40 Release 3, 11/7/2014

Copyright © 1997-2014 by Innovation Management Group, Inc.

Production/Editing/Composition/Indexing/Publishing: IMG Real World Press

### **Notice of Rights**

All Rights Reserved. No part of this book may be reproduced or transmitted in any form by any means, electronic, mechanical, photocopying, recording, or otherwise, without the prior written permission of the publisher. For information on obtaining permission for reprints, excerpts, or other uses, please contact [ts@imgpresents.com](mailto:ts@imgpresents.com)

### **Trademarks**

My-T-Mouse<sup>®</sup>, My-T-Pen<sup>®</sup>, My-T-Touch<sup>®</sup> and My-T-Soft<sup>®</sup> are registered trademarks of Innovation Management Group, Inc.

Any other product name, service, or company identified within the book is used for informational or editorial purposes only, and with no intention of infringement of any trademark. No such use is intended to convey endorsement or other affiliation with this book.

### **Notice of liability**

The information in this book is distributed on an "As is" basis, without warranty. While every precaution has been taken in the preparation of this book, IMG Real World Press shall not have any liability to any person or entity with respect to any loss or damage caused or alleged to be caused directly or indirectly by any information contained in this book or the product(s) described. The publisher takes no responsibility for any errors or omissions.

ISBN 978-0-557-96965-4

# Table of Contents

<b>Part I. Getting Started.....</b>	<b>v</b>
1. Quick Start .....	1
2. Getting Started .....	3
TouchRight Utilities User's Guide .....	3
Using this Guide .....	3
What is TouchRight Utilities? .....	4
Why do I need TouchRight Utilities? .....	4
Features.....	4
What You Need.....	5
Installing / Un-Installing TouchRight Utilities .....	5
Starting TouchRight Utilities.....	6
Licensing Information .....	6
License Manager .....	7
Commonly Asked Questions .....	13
Customer Support.....	13
Product Catalog .....	14
<b>Part II. Using TouchRight Utilities .....</b>	<b>17</b>
3. TouchRight Utilities Operation .....	18
Toggle Left-Click / Right-Click .....	18
Using TouchRight Utilities Menu.....	18
Position Menu.....	19
Options Menu .....	21
Configure Default Opening Menu .....	22
Hide until Taskbar Active .....	24
Clear Menu until Resized .....	25
Windows Menu.....	25
Help Menu .....	27
Close without Save .....	27
Close & Save Settings .....	27
4. Advanced User Notes.....	28
Advanced User Notes & Information.....	28
TouchRight Utilities Files & File Notes & Installation Information.....	28
TouchRight Utilities Initialization File Documentation (TRT.INI).....	29
Application Notes .....	30
Final Release Notes .....	31
Customer Suggestions .....	32
<b>Index.....</b>	<b>33</b>

# List of Tables

3-1. Relative Screen Positions .....	21
--------------------------------------	----

# Part I. Getting Started

**General information about this guide, the product, installation, and getting started (how to get TouchRight Utilities running).**

**Chapter 1 - Quick Start** contains details on the fastest way to install & begin using TouchRight Utilities

**Chapter 2 - Getting Started** has more information about this guide, TouchRight Utilities features, Installing / Un-Installing, Licensing Information, Standard Settings, using TouchRight Utilities Setup, Commonly Asked Questions, and information about Customer Support.

# Chapter 1. Quick Start

## Install TouchRight Utilities

There are various ways to obtain IMG software, including (but not limited to):

- Web based / Internet download from IMG's web site (<http://www.imgpresents.com/demo.htm>)
- Shipped CD / DVD physical media - IMG Product Disc
- Download ISO image file and burn IMG Product Disc CD / DVD
- USB Flash Drive (pre-installed or installed from USB media web download)
- Single file install (from local network / internet / other media)
- IMG on-line account

**Note:** IMG Software is built by product and major version with minor releases. There is only 1 unique build, but can be packaged / delivered / obtained in various ways. When unlicensed, the software acts as a demonstration / evaluation copy, and operation will be limited in length or run-time or capabilities. Once licensed (typically via License Key and Serial Number, or OEM / Company-wide / Enterprise licensing), the software will operate with no limitations.

**Recommendation:** The quickest and easiest method for obtaining IMG software is to download the current version from IMG's web site (<http://www.imgpresents.com/demo.htm>). Download, then run the file to install. Test, review, play with, and verify the software meets your needs and requirements. When ready to purchase, go to the IMG License Manager, and click on the "Purchase License Now" button. If working on a machine without internet access, use the Standard or MSI single file download, or use a Product Disc option. Separately, purchase the license for the product directly on the website - once you have your License Key and Serial Number, you can install and license the software.

The following outlines a standard retail Product Disc based install. For other options, refer to notes and details available at the source. In general, the approach is to install the software, then license the software. The Product Disc Installation Assistant provides an easy way to accomplish these two tasks.

- In Windows, insert the CD or DVD - the AutoRun feature will load the Installation Assistant - you may Install a licensed product , Install other product demos, or view Release Information. **If you have a Certificate of Authenticity, enter your License Key, Serial Number, and Name to Install and automatically License.**
- If AutoRun is not enabled:
- In Windows, Click on the Start Button
- Select Run
- Select D:SETUP, or type D:SETUP (or E:SETUP if CD/DVD drive E:, etc.)
- Press (ENTER) or click on OK
- In Windows Vista, you may not have the Run Option - select Computer, your CD/DVD drive, and open Setup
- Answer the questions and follow the instructions on your screen

**Note:** You may also Un-Install TouchRight Utilities by running SETUP.EXE After TouchRight Utilities has been properly installed. (TouchRight Utilities Setup will ask you if you wish to Un-Install.) This has been provided as a convenience to the user. It is recommended that you use the Control Panel | Add/Remove Programs Icon to remove TouchRight Utilities.

### **Start TouchRight Utilities**

Click on the Start Button, and open the Start Menu.

Select (All) Programs, then Select TouchRight Utilities. TouchRight Utilities menu will have selections corresponding to the icons in the group. Select TouchRight Utilities to begin operation.

TouchRight Utilities will automatically run after install. You may click on the small icon in the tray (near the clock) for TouchRight Utilities menu. Refer to the on-line help, and the User's guide for features and capabilities of TouchRight Utilities.

# Chapter 2. Getting Started

## TouchRight Utilities User's Guide

Version 1.40 Release 3

11/7/2014

A Utility for Windows

Information in this document is subject to change without notice and does not represent a commitment on the part of Innovation Management Group, Inc. The software described in this document is furnished under a license agreement or nondisclosure agreement. The software and documentation may be used or copied only in accordance with the terms of this agreement. It is against the law to copy the software on any medium except as specifically allowed in the license or nondisclosure agreement. The purchaser may be allowed to make a back-up copy. No part of this manual or guide may be reproduced or transmitted in any form or by any means, electronic or mechanical, including photocopying, recording, or information storage and retrieval systems, for any purpose other than the purchasers personal use, without the express written permission of Innovation Management Group, Inc.

This manual and product represent over 17 years of on-going development, testing, and support. Licensed users of the software are the most important aspect of the entire process that brings this manual and product into existence. Please be respectful of all parties involved.

### **Trademarks:**

Microsoft Windows is a trademark of Microsoft Corporation.

My-T-Mouse<sup>®</sup>, My-T-Pen<sup>®</sup>, My-T-Touch<sup>®</sup> and My-T-Soft<sup>®</sup> are registered trademarks of Innovation Management Group, Inc.

### **Copyrights**

TouchRight Utilities Copyright © 1997-2014 Innovation Management Group, Inc.

TouchRight Utilities User's Guide Copyright © 1997-2014 Innovation Management Group, Inc.

All Rights Reserved. Software Subject to Restricted Rights.

## Using this Guide

This guide is a comprehensive collection of details, notes, and information about TouchRight Utilities. Portions are incorporated within the product itself, and it is also available in various forms (e.g. printed, on-line, PDF, etc.).

### **Important User Information**

This guide is for users who are familiar with Windows, its basic concepts, and how to operate within Windows. If you are not, the information you may need to fully utilize TouchRight Utilities and this guide may be limited. You may wish to review Windows help, tutorials, and other available information on using and operating Windows before continuing using this guide.

### **Conventions used within this guide**

**Note:** Notes and other additional information will be indicated in this way



### Warning

Special and other important details to pay close attention to will appear this way

## What is TouchRight Utilities?

If you are using touch screen there is no easy way to right click. TouchRight Utilities provides easy interface for performing right clicking. To Toggle from a Left-Click to the Right-Click or back again, simply touch TouchRight Utilities window (above the Menu Button). The current state of your touch will be indicated by LEFT or RIGHT. Anytime you wish to change the type of Click, simply touch the TouchRight Utilities window. Refer to your touchscreen information for more details on using your touchscreen.



## Why do I need TouchRight Utilities?

TouchRight Utilities were created to allow a quick and easy way to perform a right-click (context menu / Properties) action via an easy to use and understand interface. When originally created, it was not common for Touchscreen and Pen drivers to provide an easy way to access the right-click. Now that most drivers do provide a mechanism to perform a right-click, customers still find the simple interface, added tools, utilities, and options built into TouchRight Utilities valuable. TouchRight Utilities provides versatility and features not found in generic right-click functions provided by the Touchscreen or Pen driver.

## Features

- Easy to use and understand approach to access Right-Click functionality from a single click interface
- Single-Right click feature - monitors action and reverts immediately back to a left click after a right-click event, or operate in fixed mode until user toggles action
- Pre-defined positions, along with complete size and position flexibility
- Window and system interface options for ease of use / access
- Hide until Taskbar active - easy way to hide, but still quickly access functions
- Operator only option

- Windows System functions - shutdown, log off, restart
- Flexible options to handle configuration and configuration menu

## What You Need

To run TouchRight Utilities you need the following equipment (hardware requirements):

- IBM 80386 or higher or compatible
- 25 mb hard disk space available
- 128 mb memory or higher
- Windows 8 / 8.1
- VGA or SVGA recommended
- Any Windows supported pointing device

## Installing / Un-Installing TouchRight Utilities

There are various ways to obtain IMG software, including (but not limited to):

- Web based / Internet download from IMG's web site (<http://www.imgpresents.com/demo.htm>)
- Shipped CD / DVD physical media - IMG Product Disc
- Download ISO image file and burn IMG Product Disc CD / DVD
- USB Flash Drive (pre-installed or installed from USB media web download)
- Single file install (from local network / internet / other media)
- IMG on-line account

**Note:** IMG Software is built by product and major version with minor releases. There is only 1 unique build, but can be packaged / delivered / obtained in various ways. When unlicensed, the software acts as a demonstration / evaluation copy, and operation will be limited in length or run-time or capabilities. Once licensed (typically via License Key and Serial Number, or OEM / Company-wide / Enterprise licensing), the software will operate with no limitations.

**Recommendation:** The quickest and easiest method for obtaining IMG software is to download the current version from IMG's web site (<http://www.imgpresents.com/demo.htm>). Download, then run the file to install. Test, review, play with, and verify the software meets your needs and requirements. When ready to purchase, go to the IMG License Manager, and click on the "Purchase License Now" button. If working on a machine without internet access, use the Standard or MSI single file download, or use a Product Disc option. Separately, purchase the license for the product directly on the website - once you have your License Key and Serial Number, you can install and license the software.

The following outlines a standard retail Product Disc based install. For other options, refer to notes and details available at the source. In general, the approach is to install the software, then license the

software. The Product Disc Installation Assistant provides an easy way to accomplish these two tasks.

- In Windows, insert the CD or DVD - the AutoRun feature will load the Installation Assistant - you may Install a licensed product , Install other product demos, or view Release Information. **If you have a Certificate of Authenticity, enter your License Key, Serial Number, and Name to Install and automatically License.**
- If AutoRun is not enabled:
- In Windows, Click on the Start Button
- Select Run
- Select D:SETUP, or type D:SETUP (or E:SETUP if CD / DVD drive E:, etc.)
- Press [Enter] or click on OK
- In Windows Vista, you may not have the Run Option - select Computer, your CD/DVD drive, and open Setup
- Answer the questions and follow the instructions on your screen

**Note:** You may also Un-Install TouchRight Utilities by running SETUP.EXE After TouchRight Utilities has been properly installed. (TouchRight Utilities Setup will ask you if you wish to Un-Install.) This has been provided as a convenience to the user. It is recommended that you use the Control Panel | Add/Remove Programs Icon to remove TouchRight Utilities.

## Starting TouchRight Utilities

Click on the Start Button, and open the Start Menu. Select (All) Programs, then Select TouchRight Utilities. TouchRight Utilities menu will have selections corresponding to the icons in the group. Select TouchRight Utilities to begin operation.

The following icons will also be available in TouchRight Utilities group:

**TouchRight Utilities** - runs TouchRight Utilities

**TouchRight Utilities Help** - opens TouchRight Utilities Help (opens this document)

**Licensing Information** - Displays current license status of TouchRight Utilities, allows instant licensing

Refer to TouchRight Utilities Operation Notes for a quick overview of TouchRight Utilities.

## Licensing Information

TouchRight Utilities uses the IMG License Manager to manage the licensed use of this product. If unlicensed, the product will run as demo (i.e. a demonstration version). In the demo (unlicensed) mode, TouchRight Utilities will run for about an hour, and then exit, displaying the license manager (announcing that it is unlicensed). You may restart TouchRight Utilities up to 100 times (the demonstration period limit). After the demonstration period is over, TouchRight Utilities will not operate unless it is licensed. For extended evaluation and testing purposes, please contact IMG

Customer Service for an evaluation license. Once licensed, the operation will not be limited in any way.

The most common methods of licensing are electronic (web/e-mail based) and by certificate (Certificate of Authenticity). In both cases, there will be a registered serial number, and a license key made available once a license has been purchased - these need to be entered into the IMG License Manager to activate a valid license. For further details, refer to the IMG License Manager. There is also USB storage device licensing, so TouchRight Utilities can be run from the USB device, simply by inserting the licensed device into any system.

**Note:** There are numerous license schemes (including OEM, site, & enterprise licenses) available to meet the needs of all our customers. If you have any licensing questions, please contact Innovation Management Group, Inc. directly.

## License Manager

In order to License TouchRight Utilities, the correct License Key and Serial Number must be entered into the IMG License Manager, along with some text for the Customer (and optional Company) text areas. The License Key and Serial Number can be found on the Certificate of Authenticity, or in the Software Unlock Codes e-mail.

The IMG License Manager will operate with an IMG Personal License. This is a system based license that can license any supported IMG product per platform. Licensing is done through the internet and your Build-A-Board.com account, accessed via the "Retrieve System License" button.

## TouchRight Utilities License Manager - Authentication

IMG License Manager - Authentication

License Information - Version 1.40.24242 [TRT140]  
 This product is locked in Demo mode. To unlock, register, and license this product, a registered Serial #, License Key and Customer Name must be entered. Please enter the details from your Certificate of Authenticity. To Purchase or Apply a License, click on the Purchase / Apply License Now button (Internet required).

[Purchase / Apply License Now](#) [Retrieve System License](#)

Information to provide with Payment  
 System ID: R140-1AD5-DDF3-7814  
[Copy System ID to Clipboard](#)

The System ID is required for proper licensing. It is important the System ID be obtained from the already installed software. To use this System ID, click Purchase / Apply License Now (above).

Enter Unlock Codes  
 (Sent after payment approved)

License Key:   
 Serial No.:   
 Customer:   
 Company:

[Additional License Options / Support](#)

Contacting Innovation Management Group, Inc. & License Information  
 World Wide Web: <http://www.imgpresents.com/order.htm>  
 E-mail: [order@imgpresents.com](mailto:order@imgpresents.com)  
 USA & Canada (Toll Free): 1-800-889-0987

[Finish](#) [Register Later](#)

When the "Purchase / Apply License Now" button is used (if applicable to the product), you will have the option of selecting a Full Support License or the IMG Personal License.

### **Professional / Full Support License**

The License Key and Serial No. entries are a matched pair, and will work together to unlock the software. The Customer entry is required (i.e. some text must be entered in the Customer text area), but is not part of the license unlock process. The Company text area is optional, and will be shown as the Source when the product is licensed.

To quickly and easily license the software (on a system that has internet access), simply click on the "Purchase / Apply License Now" button. Once connected to IMG's website, you will be asked to enter billing information and payment information. Once paid, your order will be processed, and you will receive a confirmation e-mail and a separate e-mail with license information. Once the order is fully processed, you can then click the "Retrieve Purchased License" button to automatically license your system.

**System ID Note:** The System ID is used to accurately match the Product and Version you wish to license with the License Information provided. If the system you wish to License does not have Internet Access, you can use the Copy System ID to Clipboard to accurately copy the System ID to the clipboard (which can be saved in a text file or other document and moved to a system that does have Internet Access).

**Note:** The "Retrieve System License" uses a unique identifier to automatically license your system (which is only sent if the "Purchase / Apply License Now" is used). If you try this on a different system, or after a system update or re-install (or after a change to this unique ID), the software will not license automatically. You will either need to enter the License Key and Serial Number, or go into Additional License Options (see below) and use your Order Confirmation Number and Order E-mail to retrieve the license.

**Important Note:** Be sure to save and/or print your Order Confirmation number (with Order E-mail), along with your License Key and Serial Number in case you need to re-license the software in the future (Operating System Re-install, hard disk reformat, new system, etc.)

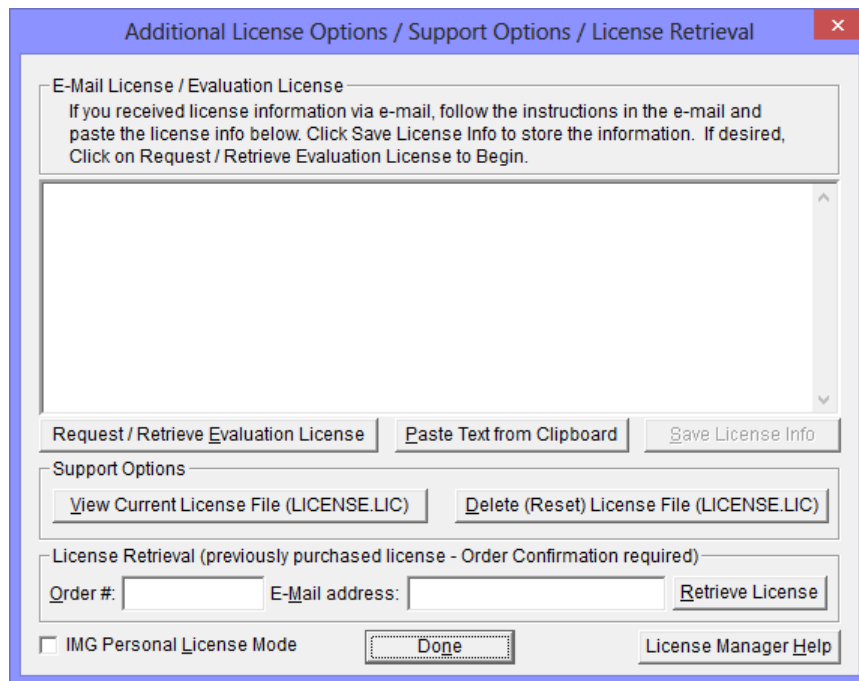
**Certificate of Authenticity Note:** For Electronic Licenses, and Certificate of Authenticity can be retrieved on IMG's website: <https://www.imgpresents.com/orders/account/licmanager.htm>. This requires a valid License Key and Serial Number. Once entered, you may view a PDF of the Certificate, or download the Certificate of Authenticity PDF file (for printing or saving).

### **The IMG Personal License**

Purchase of a new IMG Personal License creates a Build-A-Board.com account, and the system will be licensed automatically via the "Retrieve System License". If you already have a Build-A-Board.com account, you can Apply a license via the "Purchase / Apply License Now" button.

## **TouchRight Utilities License Manager - Additional License Options**

### **Professional / Full Support License**



The Additional License Options section has tools and options to Enter or Paste Evaluation or Other License Information; Request and Retrieve Evaluation Licenses; Support Options to View and Delete (Reset) the License file; and a mechanism to retrieve a Purchased License by entering the Order Confirmation Number and the Order E-mail address.

Often, interested parties want to review or test the software without the demonstration license limitations, and to accommodate this, IMG makes available Evaluation Licenses. These Evaluation Licenses are fully functional licenses, but with a date limit (when the evaluation date has passed, the software will return back to the Unlicensed, Demonstration mode).

Evaluation Licenses may be requested at the Product Download pages on the website, or by using the Request / Retrieve Evaluation License button here. Note that all Evaluation License requests are reviewed, and Evaluation Licenses must be created by IMG personnel (generation is not automated).

An Evaluation License sent via e-mail contains a block of text that has the license details for the License Manager. When sent via e-mail, the text can be copied and subsequently pasted into the text area here (Paste Text from Clipboard), then saved to enable (set) the License Information (Save License Info).

Alternatively, if an Evaluation License is Requested, then after processing, it may be automatically Retrieved directly by clicking the Request / Retrieve Evaluation License button. Please refer to any additional information provided by the messages shown when using this approach.

The View Current License File (LICENSE.LIC) button will load the file LICENSE.LIC from the installation folder. This file contains the actual license information for the product, or the license information used to validate a License Key and Serial Number.

**Note:** Because an Evaluation License uses this same file, the Delete (Reset) option should be used if Licensing the product after using an Evaluation License.

The Delete (Reset) License File (LICENSE.LIC) will remove the existing LICENSE.LIC, then copy the file LICENSE.ORG to LICENSE.LIC (both in the installation folder). The file LICENSE.ORG

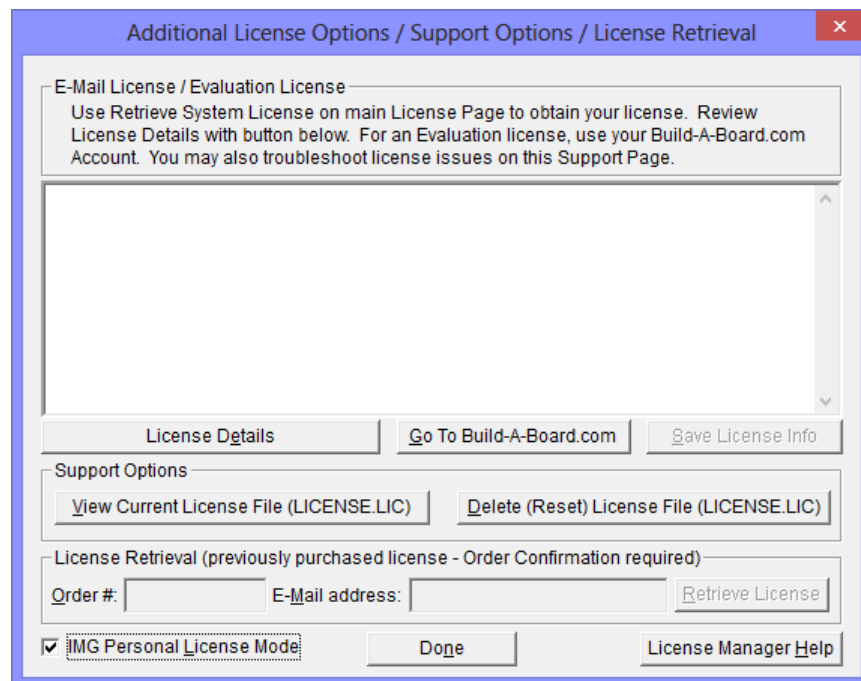
is the "as shipped" license file, and should be the License File when using a License Key and Serial Number to license the software.

**Note:** For License Purposes, using the Support Option to Delete (Reset) the License File is essentially the same as un-installing, then re-installing the software. Because this option is quicker and simpler, it is the preferred approach to resolve any license issues. Note that manually copying the file LICENSE.ORG to LICENSE.LIC (in the installation folder) performs the same operation as this option.

The License Retrieval Option will retrieve License Information from IMG's Website for electronically purchased licenses. The Order Confirmation Number and Order E-mail is required (which appear on the Order Confirmation page provided after successfully placing an on-line order, and are provided separately via an Order Confirmation E-mail).

**Note:** For Retrieved Licenses (via Retrieve Purchased License, and via the Retrieve License Support Option), License Key and Serial Number information is processed exactly as if this information was directly entered in the Authentication area. Therefore, all issues that may affect licensing also apply to these automated options (e.g. License File status, User permissions, etc.)

### The IMG Personal License



The Additional License Options section has different options when the IMG Personal License Mode is checked. The IMG Personal License is a system based license, and can be retrieved at the main license page with the "Retrieve System License" button. Most license issues can be dealt with online at your Build-A-Board.com account. There are some advanced and support options that can be managed at the Additional License Options page.

The "License Details" button will check the System License and report the issue or issues why the license is not valid. In some cases, these details may explain the situation, and point to a corrective action.

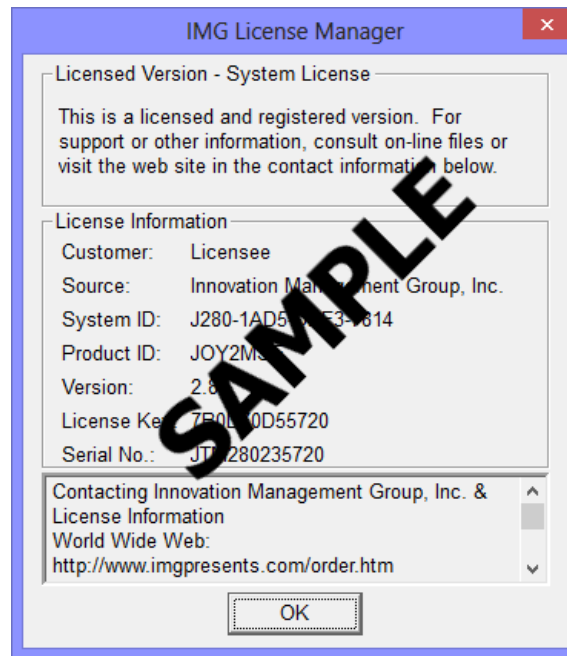
The "Go To Build-A-Board.com" button will open a browser and go directly to the login page for your Build-A-Board.com Account.

Use "View Current License File (LICENSE.LIC)" to read the System License, and display the License details. In some cases, these details may explain the situation, and point to a corrective action.

Use "Delete (Reset) License File (LICENSE.LIC)" to remove the System License and Reset the System ID. This action is not recommended and requires 2 confirmations, because all previous license information is destroyed, and a new System License will be required.

## TouchRight Utilities License Manager - Licensed Display

### Professional / Full Support License

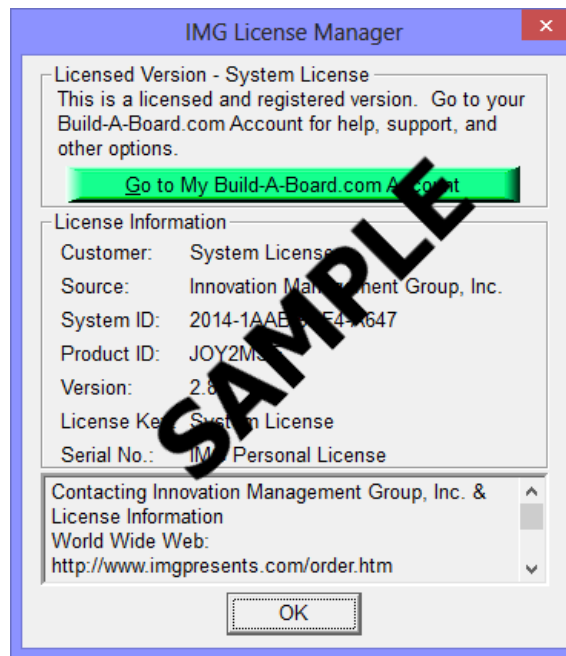


When properly Licensed, a screen similar to this will show the License Information for the product. The display of this indicates that the software is Licensed.

**Note:** Evaluation licenses also show this screen during the days that the Evaluation License is valid.

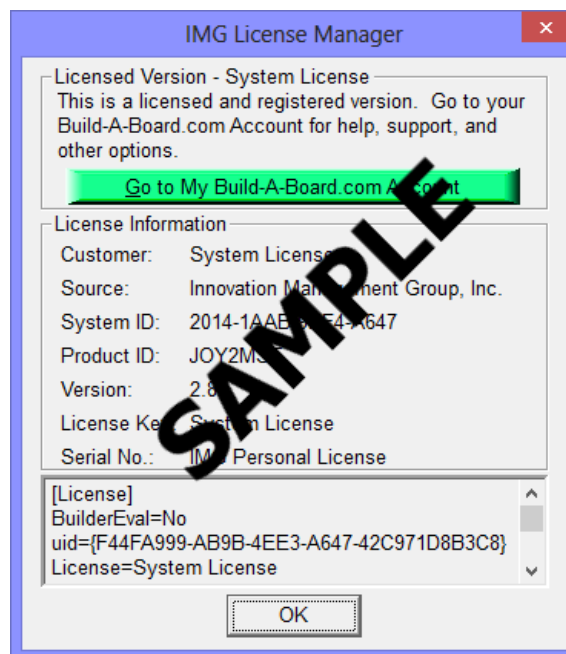
### The IMG Personal License



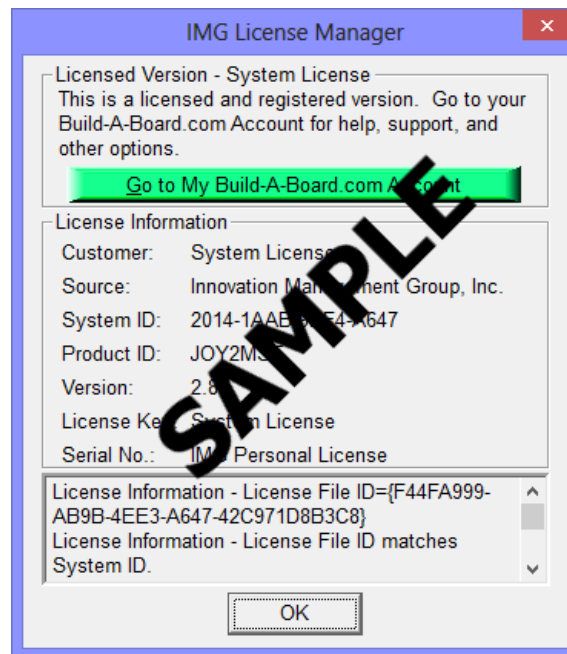


When properly Licensed with an IMG Personal License, a screen similar to this will show the License Information for the product. This display indicates that the software is Licensed. For help, support, and other options, you can click on the "Go to My Build-A-Board.com Account" to open a browser and access your account online.

If you single left click on the text display box at the bottom, it will rotate through 3 different views - License Information, IMG Personal License details for the system, and results from IMG Personal License evaluation.



The second view shows License Details from the System License.



The third view shows details on how the System License was evaluated by the License Manager.

**Technical Note:** Professional / Support Licenses are licensed per product and the LICENSE.LIC file is located in the installation folder. The IMG Personal License is a System License, and the LICENSE.LIC is located in the Common Files area of Program Files in the Innovation Management Group License Manager folder.

## Commonly Asked Questions

### Compatibility

#### 1. Does TouchRight Utilities work with all Windows Applications?

Yes.

### TouchRight Utilities Operation

#### 2. How do I Right click on a touch screen?

Click on the program window to toggle left or right clicking and then touch the screen as usual.

## Customer Support

TouchRight Utilities Software is backed by a support staff trained to provide you with fast, courteous service. Over the years, IMG has astounded individuals at the quality of its software and its support. So that we can continue to focus our resources on development and providing high-quality products & support, we do appreciate your assistance in reviewing the help, manual, and support information available at our website to see if the problem or question has already been addressed. However, if you need assistance beyond what the manual, tutorial, help files, and on-line support database provide, please contact IMG Customer Service:

Innovation Management Group, Inc.  
Customer Service  
179 Niblick Road #454  
Paso Robles, CA 93446  
USA  
1-800-889-0987 (US & Canada)  
+1-818-701-1579  
+1-818-936-0200 (fax)  
<cs@imgpresents.com>  
<http://www.imgpresents.com>

To open a Technical Support case and create a support ticket, please refer to  
<https://www.imgpresents.com/orders/support/techsupport.htm>.

Please provide, or have the following information ready when you ask for assistance:

- TouchRight Utilities version number, update level.
- Registered serial number (or if running demo)
- Make and Model of your computer.
- Windows version number, any Service Packs or major updates.
- A description of the problem.
- If possible, a list of the steps required to recreate the problem.
- If you have seen an error code, record and report the number.
- Additional information may be required, such as monitor type, type of pointing device, amount of RAM in your system, other software running (anti-virus, spyware, virtual machine, etc.).

## Product Catalog

### Innovation Management Group, Inc.'s Products

#### Commercial Division Products...

Indestructible Keyboards & Indispensable Utilities!

##### **My-T-Soft® Build-A-Board**

The Ultimate Tool for creating and modifying On-Screen Keyboards, buttons, and Panels. My-T-Soft Family, plus Cross-Platform Support

##### **My-T-Pen® for Windows**

On-Screen Keyboards & Utilities for Pen Based Systems

##### **My-T-Touch® for Windows**

On-Screen Keyboards & Utilities for Touchscreens

##### **My-T-Soft® Basic for Windows**

Basic On-Screen Keyboards and access to online database of boards. Free Edition, or IMG Personal License.

**My-T-Soft® Professional for Windows**

On-Screen Keyboards & Utilities for any pointing device Built-in Layouts, Logon Utilities, Developer Tools, and Support.

**My-T-Soft® TS for Terminal Services**

On-Screen Keyboards for Terminal Server / Terminal Services

**TouchRight Utilities**

Right Click Access for Pens & Touchscreens

**Assistive Technology Division Products...**

Enabling Tools for Special Needs

**AT Accessibility Suite**

IMG's Assistive Technology Software with site license options

**Joystick-To-Mouse**

The Software That Lets You Run Windows With A Joystick!

**My-T-Mouse®**

The Software That Makes Your Mouse a Mouse That Types! Indispensable & Utilities for any Mouse or Trackball

**OnScreen**

Special Features for disabled & impaired users Word Prediction / Word Completion / Window Control / Scanning

**OnScreen with CrossScanner**

Complete control of Windows from a single switch! Support for Keyboard, Mouse, Joystick interfaces

**SmartClick**

Operate Windows without the need to Press/Click a Button

**The Magnifier**

Area and Full Screen Magnifier, Cursor Locator, Visual Aids

**WordComplete**

Word Completion, adaptive word prediction, Word List Management, etc. Type Better, Type Less - we do the rest!

**For further information...**

**Contact your Local Software Dealer**

or

Innovation Management Group, Inc.  
179 Niblick Road #454  
Paso Robles, CA 93446  
USA  
1-800-889-0987 (US & Canada)  
+1-818-701-1579

+1-818-936-0200 (fax)  
<cs@imgpresents.com>  
<http://www.imgpresents.com>  
<http://www.my-t-mouse.com>  
<http://www.my-t-pen.com>  
<http://www.my-t-soft.com>  
<http://www.my-t-touch.com>  
<http://www.onscreen-keyboard.com>  
<http://www.build-a-board.com>  
<http://www.joystick-to-mouse.com>  
<http://www.themagnifier.us>

For International Contacts, please see Web Site...

My-T-Mouse<sup>®</sup>, My-T-Pen<sup>®</sup>, My-T-Touch<sup>®</sup> and My-T-Soft<sup>®</sup> are registered trademarks of Innovation Management Group, Inc.

# Part II. Using TouchRight Utilities

## Description of how to operate and configure TouchRight Utilities.

Description of how to operate and configure TouchRight Utilities.

**Chapter 3 - TouchRight Utilities Operation** contains general operation information, along with specific information about each of TouchRight Utilities's capabilities.

**Chapter 4 - Advanced User Notes** additional information, configuration options, and advanced notes on TouchRight Utilities.

# Chapter 3. TouchRight Utilities Operation

## Toggle Left-Click / Right-Click

Toggle Left-Click / Right-Click



To Toggle from a Left-Click to the Right-Click or back again, simply touch TouchRight Utilities window (above the Menu Button). The current state of your touch will be indicated by LEFT or RIGHT. Anytime you wish to change the type of Click, simply touch the TouchRight Utilities window.



If you hide the Menu portion of the window, the entire area is used to Toggle from a Left-Click to a Right-Click. The display indicates what type of click you are currently using.



When you are in a Right-Click mode, the window display will change to indicate the type of click that is active.

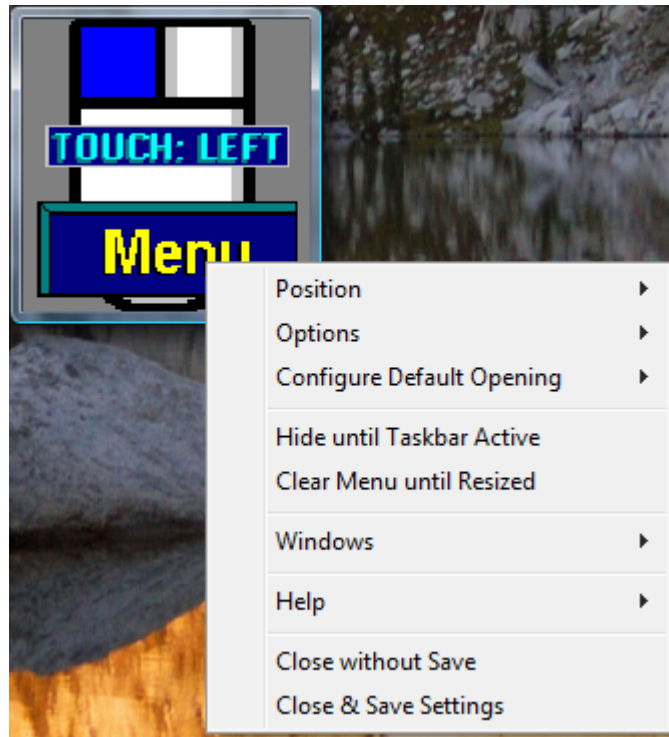
## Using TouchRight Utilities Menu

Using the Menu



By clicking anywhere on the Menu Button (lower third of TouchRight Utilities window), you will open a Popup Menu that allows you to access various options within TouchRight Utilities.

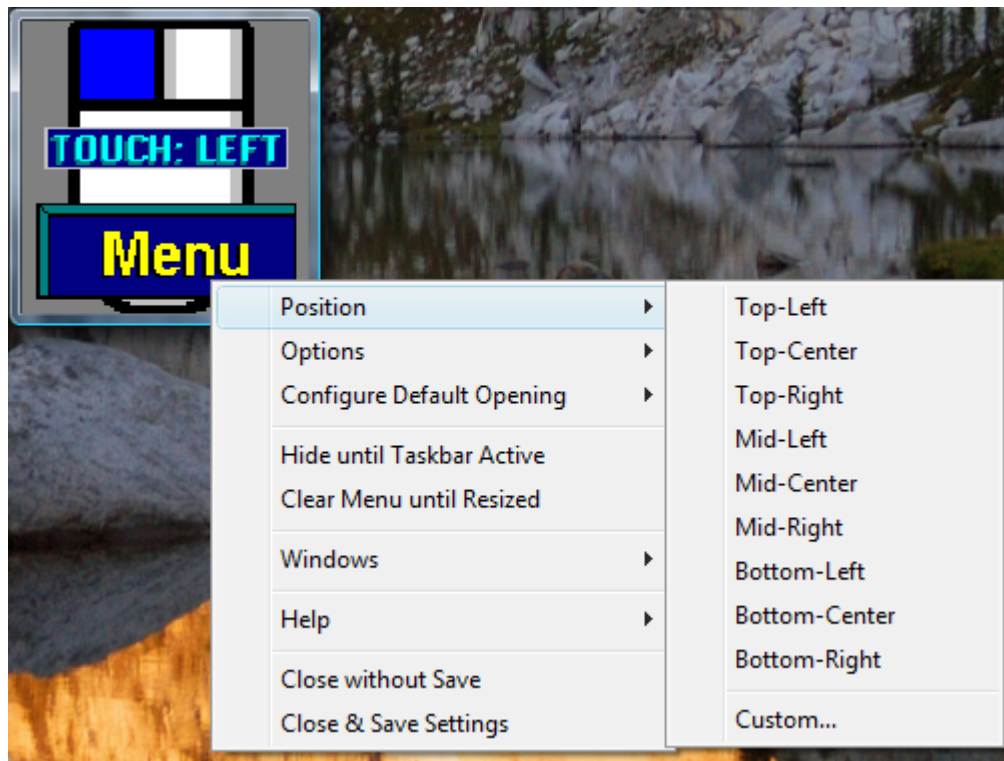
If the Menu button is not visible (Clear Menu Until Resized option), you can resize the TouchRight Utilities window to refresh and show the Menu button. Optionally (if enabled), there will be a taskbar icon in the tray (near clock and other small icons) that can be used to access the Menu.



The Menu options are discussed in the following sections.



## Position Menu



### Position

Selecting Position opens another menu that lets you select one of 9 screen positions. They include the following:

- Top-Left
- Top-Center
- Top-Right
- Mid-Left
- Mid-Center
- Mid-Right
- Bottom-Left
- Bottom-Center
- Bottom-Right
- Custom: Displays notes on custom sizing.

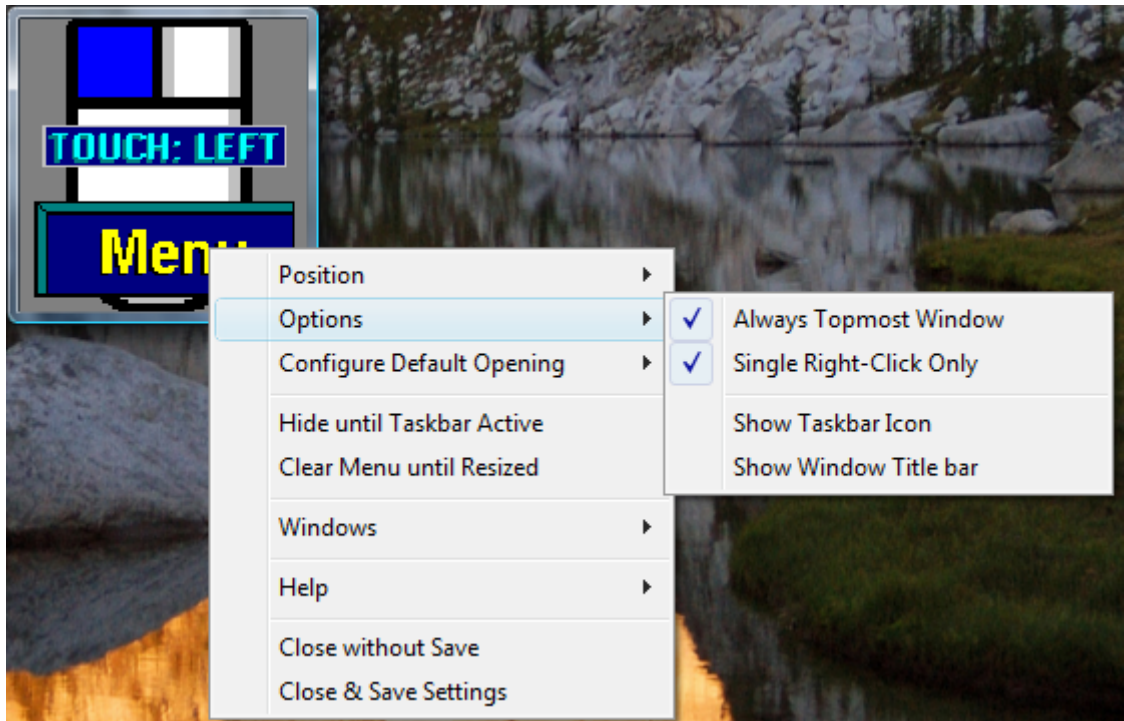
When one of the 9 fixed options is selected, the entire TouchRight Utilities window will be moved to the screen position indicated. You also have the option of using the sizing borders to change the size and/or position of TouchRight Utilities. You may click & drag the borders to position the TouchRight Utilities window anywhere on your screen at any size.

**Note:** To easily move the window position, you have the option of showing the Window Title bar (Show Window Title bar in Options Menu). Otherwise, you typically need to perform two sizing operations (click & drag) to position and size the window at any particular screen location.

Table 3-1. Relative Screen Positions

<b>Top-Left</b>	<b>Top-Center</b>	<b>Top-Right</b>
<b>Mid-Left</b>	<b>Mid-Center</b>	<b>Mid-Right</b>
<b>Bottom-Left</b>	<b>Bottom-Center</b>	<b>Bottom-Right</b>

## Options Menu



### Options

Selecting Options opens another menu that lets you select one of 4 operation options. They include the following:

- Always Topmost Window
- Single Right-Click Only
- Show Taskbar Icon
- Show Window Title bar

### Always Topmost Window

This toggles whether TouchRight Utilities is always topmost (always visible above other windows) or not. A Check Mark in the menu indicates that the Topmost setting is active. For best results, it is recommended that the Topmost setting be On.

### Single Right-Click Only

When toggled On (Check Mark in menu), only a single Right-Click is allowed (right button down, right button up) - after the right button up event, the TouchRight Utilities automatically switches back to the Left-Click. When Off, you must touch the TouchRight Utilities window to toggle back to the Left-Click. Most people prefer this setting to be active, but there may be situations where this automatic action is not desired.

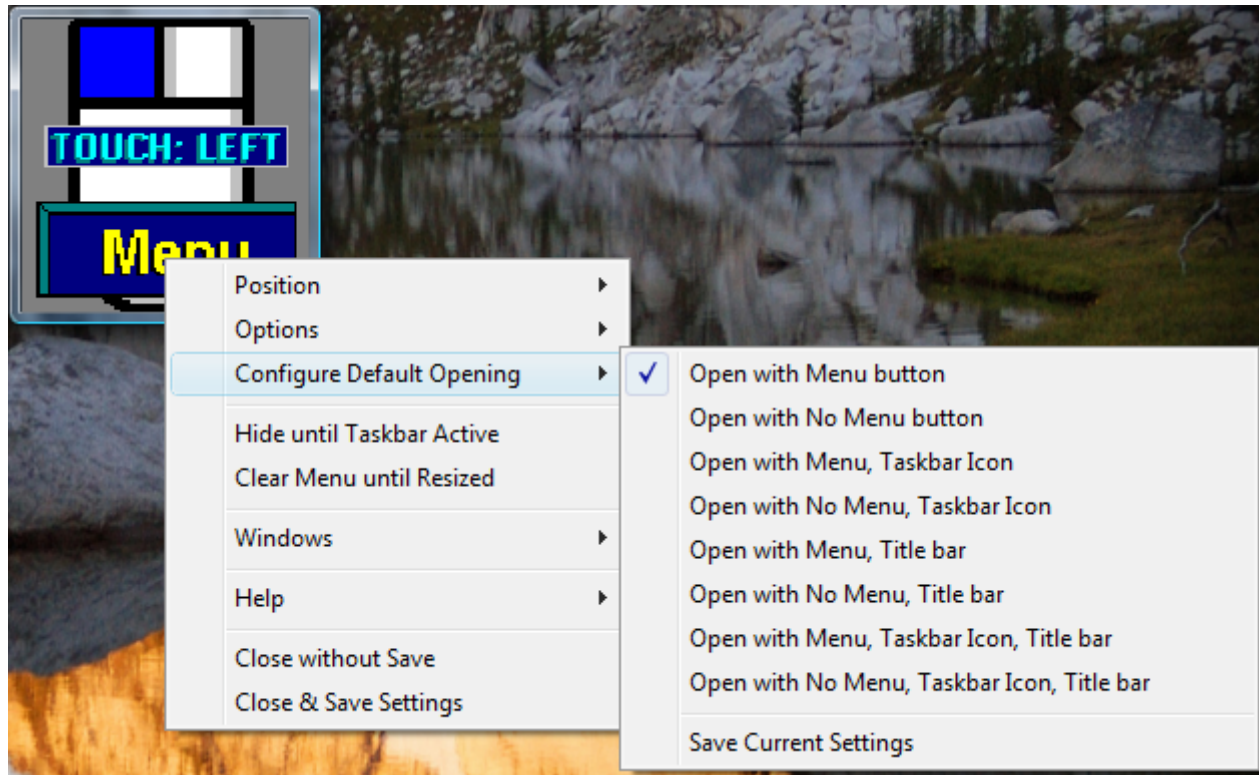
### Show Taskbar Icon

This toggles whether TouchRight Utilities displays a small icon in the System Tray (near clock and other small icons). This provides an alternate way to access the Menu, and can be useful when the Clear Menu option is selected.

### Show Window Title bar

This toggles whether TouchRight Utilities displays a Window title bar (Caption bar). Having a title bar provides an easier way to drag the window during operation. If moving the TouchRight Utilities window during normal operation is not required or desired, often the title bar is not displayed.

## Configure Default Opening Menu



### Configure Default Opening

Selecting Configure Default Opening displays another menu where you can determine the opening configuration (e.g. how TouchRight Utilities opens when started). There are 8 combinations, along with a Save Current Settings Option. Whenever a specific combination is selected, its configuration settings will be saved immediately. To test the configuration settings, use the Close without save option on the main menu.

- Open with Menu button

- Open with No Menu button
- Open with Menu, Taskbar Icon
- Open with No Menu, Taskbar Icon
- Open with Menu, Title bar
- Open with No Menu, Title bar
- Open with Menu, Taskbar Icon, Title bar
- Open with No Menu, Taskbar Icon, Title bar
- Save Current Settings

**Open with Menu button**

This option does not include the Window Title bar, or the taskbar icon, and will display the window with sizing borders, and the menu button.

- Menu Button: **Yes**
- Menu Readily Accessible: **Yes**
- Window Title bar: **No**
- Taskbar Icon: **No**

**Open with No Menu button**

This option does not include the Window Title bar, or the taskbar icon, and will display the window with sizing borders only, no menu button.

- Menu Button: **No**
- Menu Readily Accessible: **No**
- Window Title bar: **No**
- Taskbar Icon: **No**

**Open with Menu, Taskbar Icon**

This option will show the Taskbar Icon, but does not include the Window Title bar, and will display the window with sizing borders only, and the menu button.

- Menu Button: **Yes**
- Menu Readily Accessible: **Yes**
- Window Title bar: **No**
- Taskbar Icon: **Yes**

**Open with No Menu, Taskbar Icon**

This option will show the Taskbar Icon, but does not include the Window Title bar, and will display the window with sizing borders only, and no menu button.

- Menu Button: **No**
- Menu Readily Accessible: **Yes**
- Window Title bar: **No**
- Taskbar Icon: **Yes**

**Open with Menu, Title bar**

This option includes the Window Title bar with sizing borders, and the menu button, but no Taskbar Icon.

- Menu Button: **Yes**
- Menu Readily Accessible: **Yes**
- Window Title bar: **Yes**
- Taskbar Icon: **No**

**Open with No Menu, Title bar**

This option includes the Window Title bar with sizing borders, but no menu button and no Taskbar Icon.

- Menu Button: **No**
- Menu Readily Accessible: **No**
- Window Title bar: **Yes**
- Taskbar Icon: **No**

**Open with Menu, Taskbar Icon, Title bar**

This option includes the Window Title bar with sizing borders and the Taskbar Icon, along with the menu button.

- Menu Button: **Yes**
- Menu Readily Accessible: **Yes**
- Window Title bar: **Yes**
- Taskbar Icon: **Yes**

**Open with No Menu, Taskbar Icon, Title bar**

This option includes the Window Title bar with sizing borders and the Taskbar Icon, but no menu button.

- Menu Button: **No**
- Menu Readily Accessible: **Yes**
- Window Title bar: **Yes**
- Taskbar Icon: **Yes**

**Save Current Settings**

This option saves off the current settings as currently configured in TouchRight Utilities

## Hide until Taskbar Active

**Hide until Taskbar Active**

When selected, the TouchRight Utilities window hides until the Windows Taskbar becomes active. This is a mode to recover screen real-estate, but have the TouchRight Utilities window immediately

available when required. When hidden, simply touch a clear area of the Taskbar (i.e. next to an task button (icon button)).

**IMPORTANT NOTE:** If you select this option, and you still see the TouchRight Utilities window or you see it flash, then the Taskbar is currently the active window - open another application window, or click on the desktop before selecting this menu option again.

**Note:** On some versions of Windows, the Start Menu may also activate the taskbar, causing the TouchRight Utilities window to be shown.

**Note:** If you have the Taskbar Icon configured, you can also make the TouchRight Utilities window visible by de-selecting the Hide until Taskbar Active option.

## Clear Menu until Resized

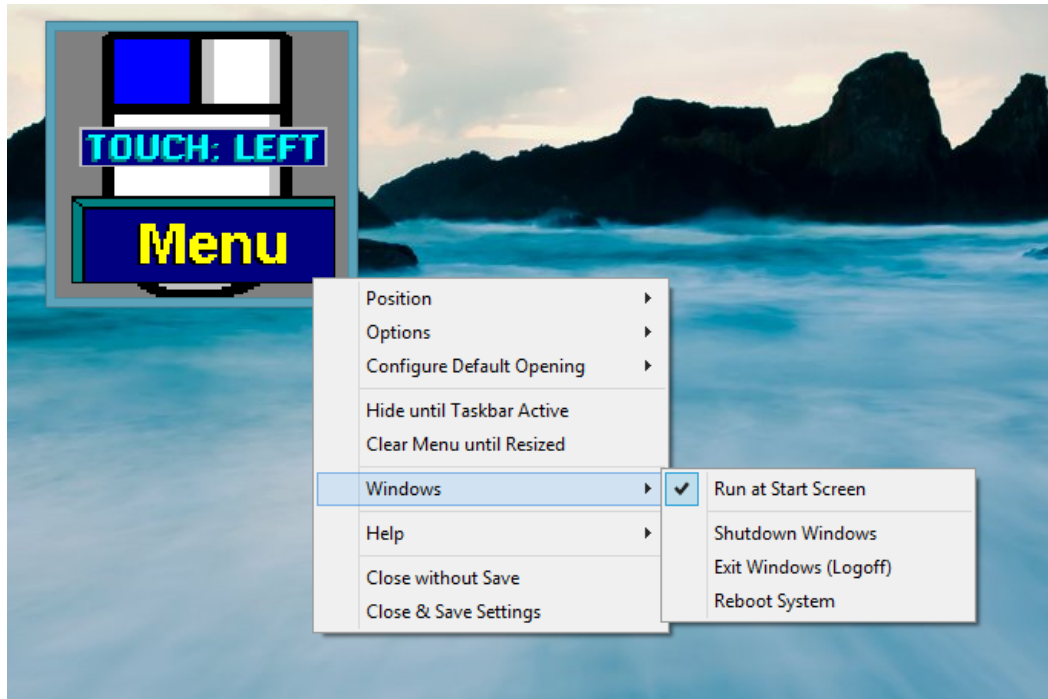
### Clear Menu until Resized

When selected, this options temporarily clears the menu button, so the entire window will toggle the left/right action. When the sizing borders are selected, and the window is resized (however slightly), the Menu button will be shown again.

**Note:** If you have the Taskbar Icon configured, you can access the menu directly from the small icon. Also, you can make the menu button visible again by de-selecting the Clear Menu until Resized option.

## Windows Menu

### Windows Menu



This selection opens a menu with the following selections:

**Run at Start Screen**

This enables an Ease of Access option to start TouchRight Utilities at the Start Screen.

**Shutdown Windows**

This initiates the Shutdown sequence for Windows.

**Exit Windows (Logoff)**

Ends the current Windows session.

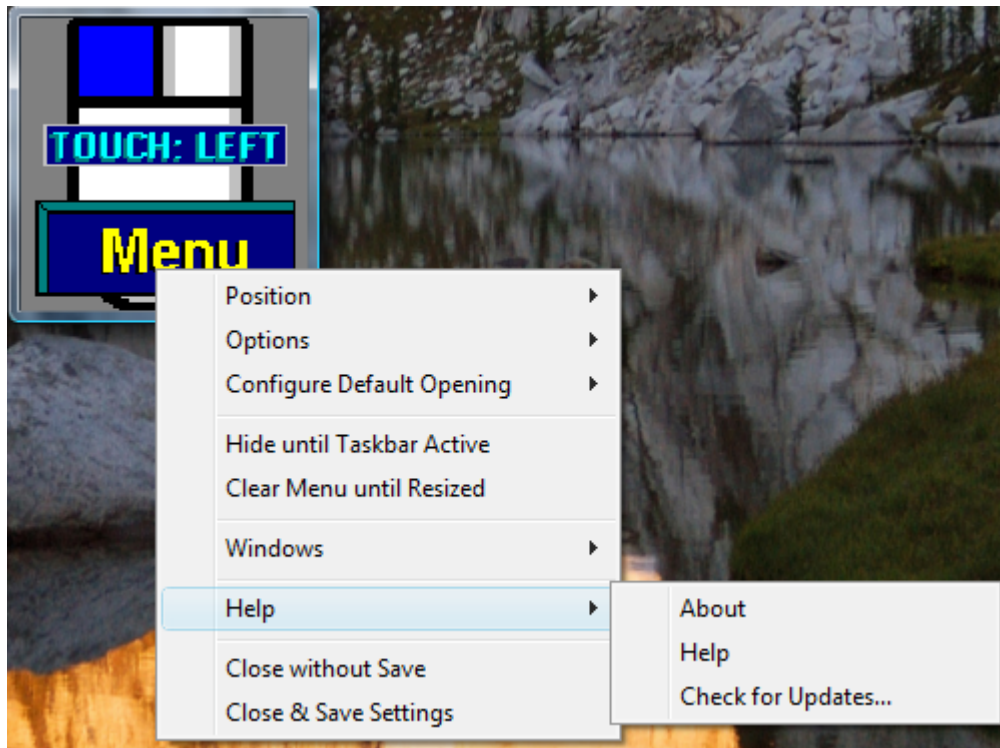
**Reboot System**

This resets the entire system (Warm Start).

**Note:** This menu can be disabled by setting Operator=1 in the TRT.INI file. See the TRT.INI file in the installation directory for more details.

**Technical Notes on Windows 8 Run at Start Screen option:** The Run at Start Screen option runs TRTADMIN.exe (or TRTADMIN64.exe in 64-bit versions). For certain User Account Control settings, you may be prompted to allow this to run when the menu option is selected. When run, it will set or clear registry settings for this Ease of Access option (if set, they will be cleared, if clear, they will be set). When set, the Ease of Access option can be seen for configuring mouse/keyboard as "Enable TouchRight Utilities Ease of Access Start Screen Options". This option can be disabled via Control Panel | Ease of Access Center, but the TouchRight Utilities menu option will still be checked. The TRTADMIN utility when run via this menu option establishes the appropriate Ease of Access registry settings, or removes/deletes them. The TouchRight Utilities Windows menu option is checked when the registry entries exist, separate from whether the option is enabled/disabled. For best results, use the Options menu | Show Window Title Bar - on some systems, the non-titled window style when launched may be treated as a desktop launch, bypassing the start screen.

## Help Menu



### **About**

Displays current version, copyright, and basic information about the TouchRight Utilities.

### **Help**

Opens this Help file.

### **Check for Updates...**

Opens the IMG Download Manager that can be used to check for product updates and options.

## Close without Save

### **Close without Save**

This will Close and Exit TouchRight Utilities without performing any additional action, and the current position, size, and current settings will not be saved.

## Close & Save Settings

### **Close & Save Settings**

This will Close and Exit TouchRight Utilities, and the current settings will be saved. The window position, and any features or options enabled will be used when TouchRight Utilities is opened the next time.



# Chapter 4. Advanced User Notes

## Advanced User Notes & Information

The Advanced User Notes and Technical Documentation covers a wide-range of topics & information. Detailing all of the features, options, settings mixed in with the standard product help would overwhelm the majority of users, so the more technical and advanced portions are included here.

**Note:** For up-to-date information, and other specific technical issues, it will always be important to refer to the on-line support database at <http://www.imgpresents.com/imgfaq.htm>

If you have been referred to this section, or have been unable to resolve your question(s) or problems within this manual, on-line help, and tutorial, or are an advanced user familiar with Windows Initialization files (INI type files), the Registry, and wish to learn all of TouchRight Utilities configuration Options, please read the following chapter. For developers, integrators, or technicians, the following information should be read in its entirety - also refer to the IMG Developer's Kit for even more options & other advanced information.

## TouchRight Utilities Files & File Notes & Installation Information

TouchRight Utilities Files & File Notes

Files located in the \Program Files\TouchRight Utilities Installation Directory:

The following files are REQUIRED for proper operation of

TouchRight Utilities: (Version specific files indicated)

\* - indicates the minimum files required for functional operation of TouchRight Utilities

- TRTUTILS.EXE\* - TouchRight Utilities executable
- TRT.INI\* - TouchRight Utilities Initialization File
- TRT.ORG - Original TouchRight Utilities Initialization File
- IMGVERS.DLL\* - IMG Dynamic Link Library
- HELP\*.html, HELP\IMAGES\\*.png - TouchRight Utilities Help
- LICENSE.EXE\* - IMG License Manager
- LICENSE2.EXE\* - IMG License verification only (read-only access)
- LICENSE.LIC\* - IMG License File
- LICENSE.ORG - Original IMG License File
- README.TXT - Product Installation text file
- MANIFEST.TXT - Reference File from Build
- IMGUTIL.EXE - used for installation and uninstallation of software
- UNZIP32S.DLL - Dynamic Link Library for installation and updates

- uninstall.exe - Used for un-installation link (MSI Installs)

Other Folders:

- MANAGER\ESTABLISH.EXE - this is a post installation utility that establishes or updates the IMG Download Manager and IMG License Manager files as outlined below.

**Located in \Program Files\Common Files\Innovation Management Group\Download Manager directory:**

- IMGCLEAN.EXE - used to complete uninstall of software, required for Control Panel Add/Remove Programs

- IMGDLM.EXE - The IMG Download Manager - Installed by MANAGER\ESTABLISH.EXE

- IMGNET.DLL - The IMG Download Manager Library - Installed by MANAGER\ESTABLISH.EXE

**Located in \Program Files\Common Files\Innovation Management Group\License Manager directory:**

- LICENSE.DLL - library used by the IMG License Manager and IMG Download Manager

## TouchRight Utilities Initialization File Documentation (TRT.INI)

Listed below are settings and information for specific applications that require special actions by TouchRight Utilities, along with the Configuration settings for TouchRight Utilities.

All Settings are the default Settings of TouchRight Utilities.

### Registry vs. INI

The default approach is to use the settings in the registry for the current user, i.e. the key [HKEY\_CURRENT\_USER\Software\Innovation Management Group\TouchRight Utilities\Settings]. These same settings names are in the TRT.INI file in the [Settings] section. There are also comments and notes in the TRT.INI located in the Installation folder. Note that if the registry entries are not present, the TRT.INI is read, and these settings are the default settings for the current user (assuming that DoNotUseRegistry=0 in the TRT.INI) - the Registry settings for the current user will be used from then on. Registry settings for the current user (or any other user) are NOT removed when TouchRight Utilities is un-installed.

### DoNotUseRegistry=0

If DoNotUseRegistry=0, then the registry is used for the current user. The INI file is only used for initial settings for a user with no current settings.

If DoNotUseRegistry=1, then the INI file is used (and user must have read/write access to the INI file to access and update the settings in the INI file). This setting is typically used when running from a removable drive, such as a USB drive.

### Topmost=1

Window is Always on Top if TopMost=1. The TouchRight Utilities window is a normal sizable popup window if TopMost=0. This is the setting for the Always Topmost Window in the Options Menu.

### SingleClick=1

This setting sets system hook to monitor for right-click up event. If SingleClick=1, then the right-click up event triggers TouchRight Utilities to automatically return to left-click. If SingleClick=0, then user must manually click on TouchRight Utilities window to return to the left-click mode of operation. This is the setting for the Single Right-Click Only in the Options Menu.

**OpenPositionX=0**

**OpenPositionY=0**

OpenPositionX and OpenPositionY indicate where on screen TouchRight window should Open - X & Y indicate Top Left Corner. Default is center of screen. 0 indicates use default. Therefore, window cannot open at position 0,0 - use -1,-1 or 1,1

**OpenWidth=0**

**OpenHeight=0**

OpenWidth and OpenHeight indicate size of window. Default window is about 100 x 100. 0 indicates use default. Do not use values below 20.

**Operator=0**

This is an INI setting only (not accessible via the product / user interface - Also, it is not present in the Registry unless manually created). The Operator setting affects the menu available to the user. If Operator=0, then the full menu is available, and all options, including restarting windows, etc. are included. If Operator=1, then no menu is available to the user. This setting is for controlled situations where the user is considered an operator, not an administrator.

**ShowTitleBar=0**

The ShowTitleBar will change the window style when creating the window. If ShowTitleBar=1, then the window style will be created with a titlebar and close button. If ShowTitleBar=0, then the window will be a sizeable popup window with no title bar or other window decorations. This is the setting for the Show Window Title bar in the Options Menu.

**ShowTaskbarIcon=0**

If this setting is included, it will establish the default setting for the visibility of the taskbar icon in the tray (next to clock). If ShowTaskbarIcon=0, there will be no icon shown. If ShowTaskbarIcon=1, the icon will be shown in the tray, and the menu will be accessible from this icon. This is the setting for the Show Taskbar Icon in the Options Menu.

**HideUntilTaskbar=0**

If this setting is included, it will establish the default setting for the visibility of the window. If HideUntilTaskbar=0, operation will be normal. If HideUntilTaskbar=1, the TouchRight Utilities window will be hidden until the Taskbar obtains the input focus (i.e. it is clicked). This is the setting for the Hide until Taskbar Active.

**HideMenuUntilResized=0**

If this setting is included, it will establish the default setting for the visibility of the menu indicator in the TouchRight Utilities window. If HideMenuUntilResized=0, the menu will be visible, and a click in the bottom third will open the menu. If HideMenuUntilResized=1, the menu will not be shown, and the full window will handle the left/right toggle, until the TouchRight Utilities window is resized. This is the setting for the Clear Menu until Resized.

## Application Notes

### Topmost Windows

Topmost windows will always be above all other windows. The window manager sorts multiple topmost windows based on the order of when the topmost window attribute setting was set. If there are multiple topmost windows in the system, the window manager needs some way to order these windows (there can be only one topmost window in the list, and if there are multiple windows with the topmost attribute, some sort of ordering is required). When multiple windows are topmost, it is possible TouchRight Utilities will not be visible. One option is to clear the Always Topmost setting, then reset it. If you are in control of the application that is topmost, you have the option of using the SetWindowPos API call to control the order of the topmost windows. You may run TouchRight Utilities after all other applications and topmost windows have been created and shown, to ensure it is the last window set with the topmost window attribute.

**Note:** Applications and other programs may also force the topmost setting for their windows - TouchRight Utilities only sets this attribute when its window is created, so if TouchRight Utilities is NOT the topmost window, then it is likely other windows have this attribute, or are forcing this attribute, causing the TouchRight Utilities window to be lower in the Z order for topmost windows. If additional assistance regarding this topic is required for your particular application, please contact IMG customer service.

### Device Compatibility

Over the years the product has been available, every once in a while, a question about an otherwise unheard of touchscreen device will be raised. From what we can gather, there are some low volume touchscreen interfaces that do not use the standard pointing device interface via a Windows compatible driver. In these cases, the approach used in TouchRight Utilities does not appear to affect the Left/Right toggle. Specifically, TouchRight Utilities will work fine with a physical mouse connected to the system, but the touchscreen itself is not affected by the TouchRight Utilities. So any device that does not use a driver, and perhaps uses higher-level functions (APIs such as SendInput, mouse\_event, etc.) to create the mouse click events will effectively bypass the swapped mouse buttons to generate Left/Right events. This is why IMG always recommends interested parties download and test with any IMG software to ensure that the results are satisfactory, especially if non-standard hardware is being used.

**Note:** In some cases, other IMG software may be useful in providing a complete system. For example, using the Shift-F10 keystroke combo will open Context/Property menus, and can be accessed via the IMG My-T-Soft family of on-screen keyboards. Also tools such as SmartClick may provide other functionality necessary when working with devices that don't truly replace the mouse / pointing device interface.

## Final Release Notes

Version 1.10 - Original Release 1997.

Version 1.20 - Support for Windows NT/2000/XP 2001.

Version 1.21 - Requested updates February 17, 2003.

Version 1.30 - Various requested updates, support for Windows Vista/Windows 7. July 16, 2009

Version 1.30 Release 4 - Windows Vista/Windows 7 update for User Account Control / synchronization to IMG Products Disc (no Release 2 or 3). November 24, 2009

Version 1.30 Release 5 - updates to the IMG License Manager. September 17, 2012

Version 1.40 - Windows 8 compatibility. July 23, 2013

Version 1.40 Release 2 - IMG Personal License. February 14, 2014

Version 1.40 Release 3 - 11/7/2014

## Customer Suggestions

We appreciate and welcome suggestions from our users for features that you would like to see in future versions of TouchRight Utilities. Please feel free to send us any comments you may have that would make our product more useful to you. All suggestions and ideas become the property of Innovation Management Group, Inc.

Send to:

Innovation Management Group, Inc.  
Customer Service  
179 Niblick Road #454  
Paso Robles, CA 93446  
USA

Or contact us directly:

1-800-889-0987 (US & Canada)  
+1-818-701-1579  
+1-818-936-0200 (fax)  
<cs<http://www.imgpresents.com>

Date: \_\_\_\_\_

Name: \_\_\_\_\_

Address: \_\_\_\_\_

City: \_\_\_\_\_

State: \_\_\_\_\_ Zip: \_\_\_\_\_

TouchRight Utilities Comments and Suggestions:

\_\_\_\_\_  
\_\_\_\_\_  
\_\_\_\_\_  
\_\_\_\_\_

Version 1.40 Release 3

11/7/2014

Copyright © 1997-2014 by Innovation Management Group, Inc.

All Rights Reserved.

My-T-Mouse®, My-T-Pen®, My-T-Touch® and My-T-Soft® are registered trademarks of Innovation Management Group, Inc.

# Index

## A

Add/Remove Programs, 1, 6  
Advanced User Notes, 28  
Application Notes, 30

## C

Catalog, 14  
CD (CD-ROM or DVD), 1, 5  
Certificate of Authenticity, 1, 5  
Clear Menu until Resized, 25  
Close & Save Settings, 27  
Close without Save, 27  
Commonly Asked Questions, 13  
Compatibility, 30  
Configure Default Opening Menu, 22  
Copyrights, 3  
Customer Service, 13  
Customer Suggestions, 32  
Customer Support, 13

## D

Default Opening - Configure, 22  
Device Compatibility, 30  
Display, 13  
DoNotUseRegistry - INI, 29  
DVD (CD-ROM or DVD), 1, 5

## E

Ease of Access, 25  
equipment, 5  
Evaluation License, 8

## F

Features, 4  
File Notes, 28  
Files - Product Files Installed, 28  
Final Release Notes, 31

## G

Guide (Using), 3

## H

hard disk space, 5  
hardware requirements, 5  
Help Menu, 27  
Hide until Taskbar Active, 24  
HideMenuUntilResized - INI, 30  
HideUntilTaskbar - INI, 30

## I

IMG, 6, 7  
IMG Personal License, 7  
Important User Information, 3  
INI - File Documentation (TRT.INI), 29  
Initialization File Documentation (TRT.INI), 29  
Innovation Management Group, Inc., 13  
Install  
    Installing, 1, 6  
    Installing / Un-Installing, 5  
IPL (IMG Personal License), 7

## L

License Key, 1, 5, 7  
License Manager, 7  
Licensing, 7  
Licensing Information, 6

## O

OpenHeight - INI, 30  
Opening Settings - Configure Default, 22  
OpenPositionX - INI, 30  
OpenPositionY - INI, 30  
OpenWidth - INI, 30  
Operator - INI, 30  
Options Menu, 21

## P

Personal License, 7  
Position Menu, 20  
Product Catalog, 14

## Q

Questions  
    Commonly Asked Questions, 13  
Quick Start, 1

## R

Release Information, 1, 6  
Release Notes, 31  
requirements, 5

## S

Serial Number, 1, 5, 7  
Setup, 1  
Short-Cut, 4  
ShowTaskbarIcon - INI, 30  
ShowTitleBar - INI, 30  
SingleClick - INI, 29  
Start Screen, 25  
Startup options, 25  
Suggestions, 32  
Support  
    Customer Support, 13  
    website, 13  
System requirements, 5

## T

Technical Documentation Section, 28  
Toggle Left-Click / Right-Click, 18  
TopMost - INI, 29  
Topmost window order, 30  
Trademarks, 3  
TRT.INI File Documentation, 29

## U

Un-Install, 6  
Using the Menu, 18  
Using this guide, 3

## V

Version, 31

## W

website, 13  
What is TouchRight Utilities, 4  
What You Need, 5  
Why Do I Need TouchRight Utilities?, 4  
Windows Applications, 13  
Windows Menu, 25